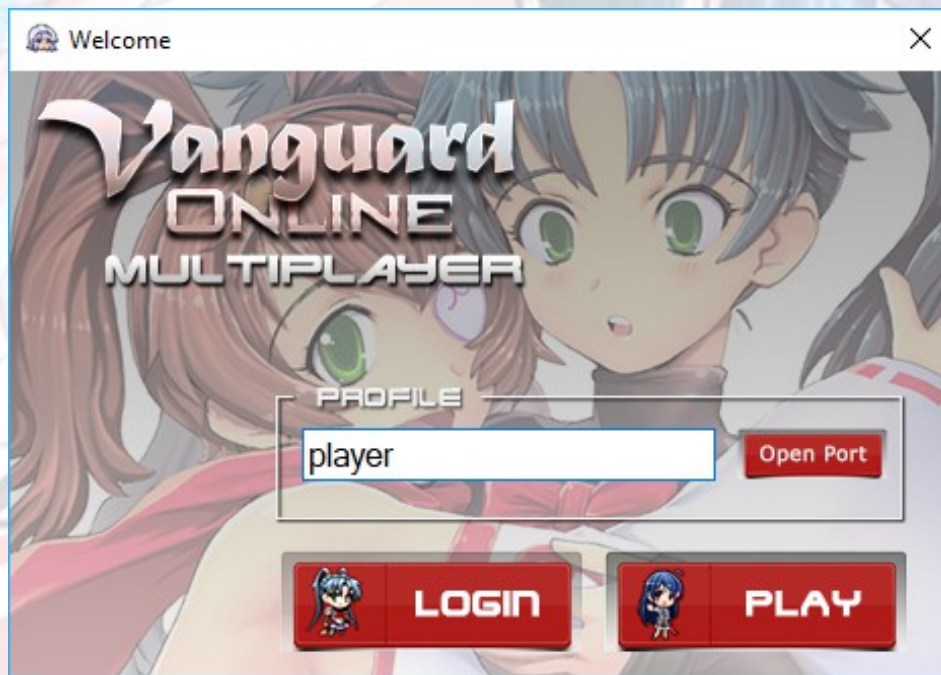


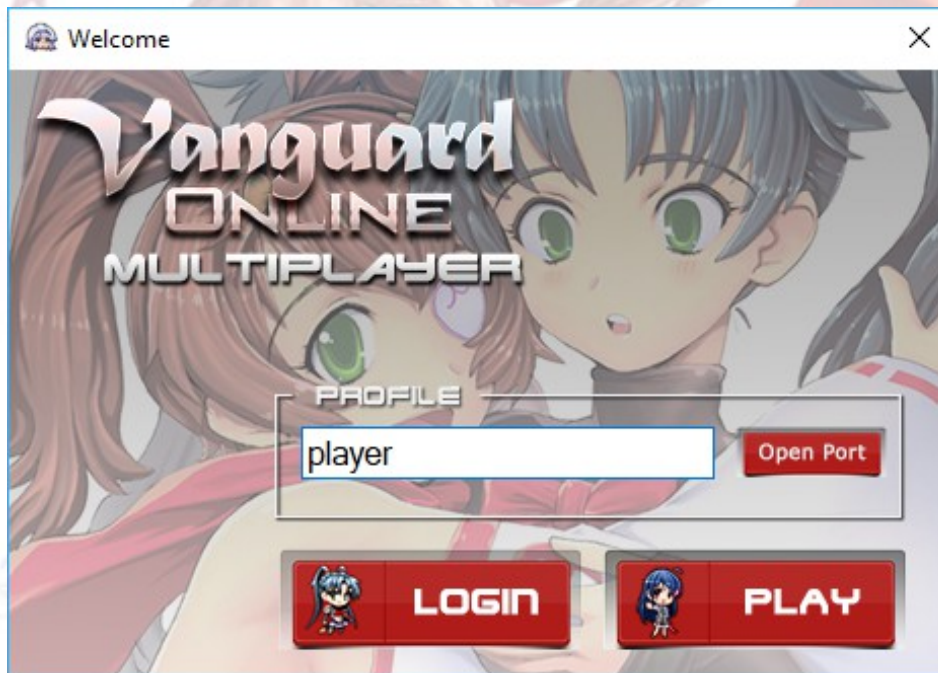
# Vanguard ONLINE MULTIPLAYER

## Basic Tutorials

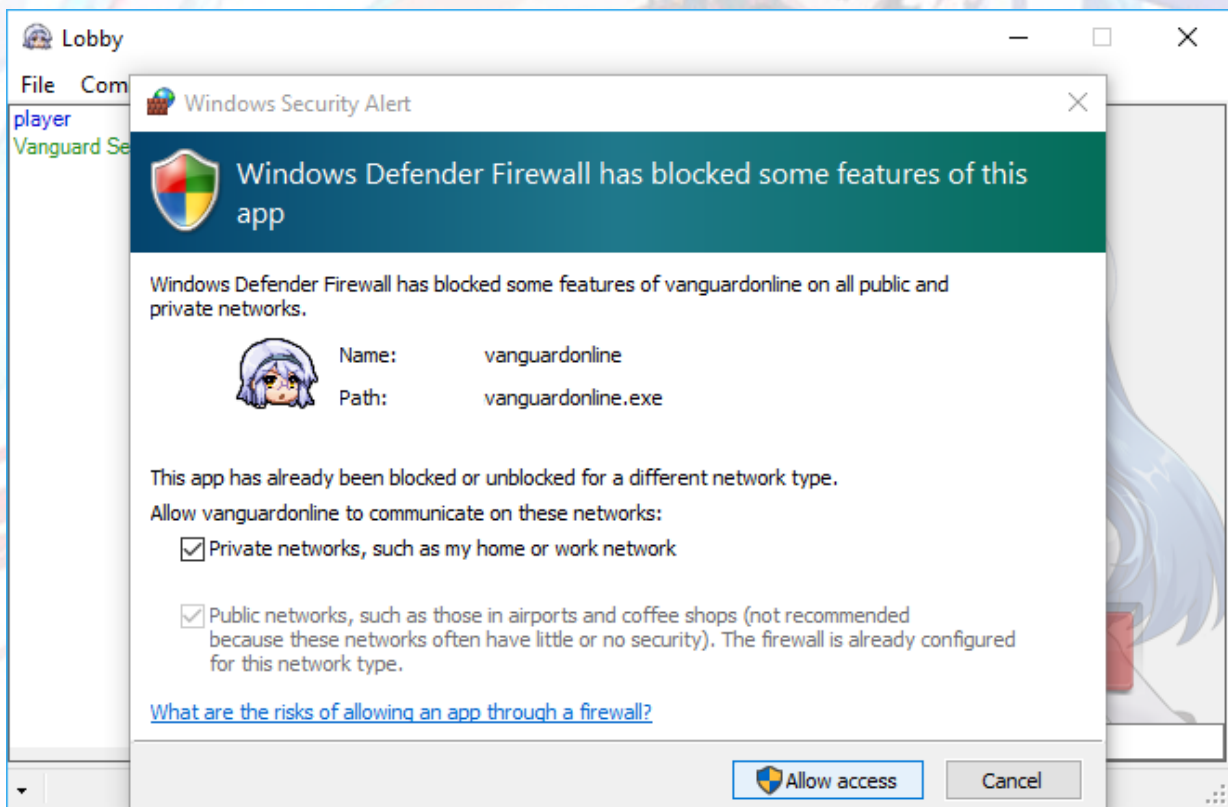


The application should launch automatically once the Vanguard Princess game opens. If not go directly to the Vanguard Princess game directory and open "VanguardOnline.Exe"

Create a player name profile for yourself. Select the “Login” button to go online or “Offline” to play offline.

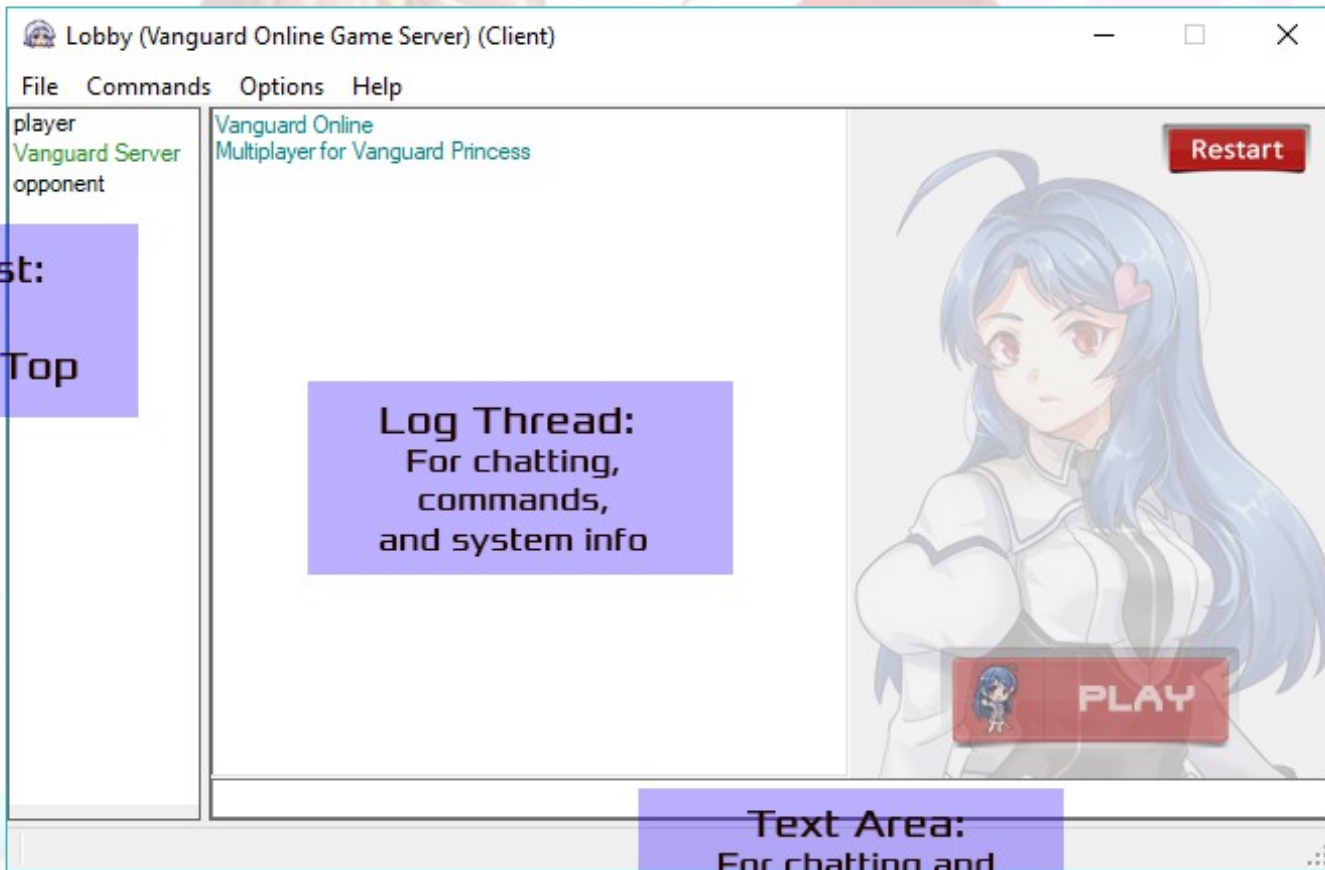


If necessary, select the “Open Port” button to set your listening port. 7500 is the default setting.



Make sure that you Allow Access to connect online if your computer's firewall attempts to block online connections.

You will see a screen like this if you have made a successful connection.



**Player List:**  
You are  
always on Top

**Log Thread:**  
For chatting,  
commands,  
and system info

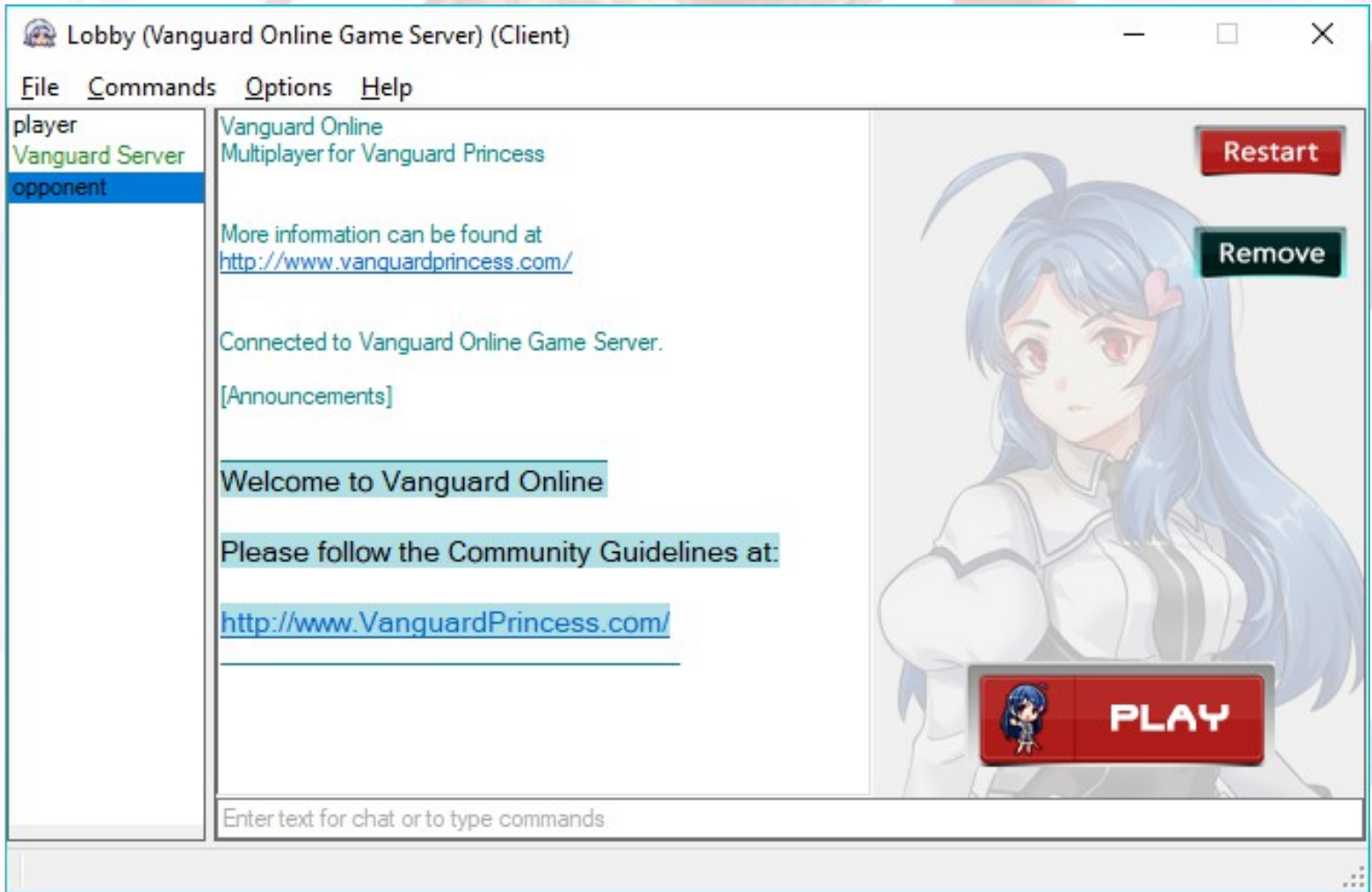
**Text Area:**  
For chatting and  
making system  
commands

Your player name will always appear on the top of the "Player List:" followed by "Vanguard Server" (which can not be selected). All other names underneath "Vanguard Server" will be the online Opponents.

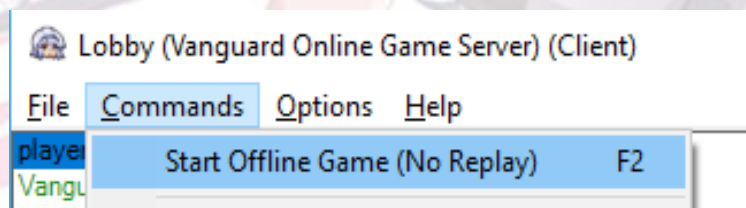
"Restart" button enables you to restart your session. The "Play" button is disabled until you are ready to play against a name on the Player List.

Go to "Command List" under the Help section of the menu screen or type "/help" in the Text Area to see the full list of system commands.

To challenge an online Opponent, click on their player name and click the “Play” button. You have the option to record your game sessions to your computer.

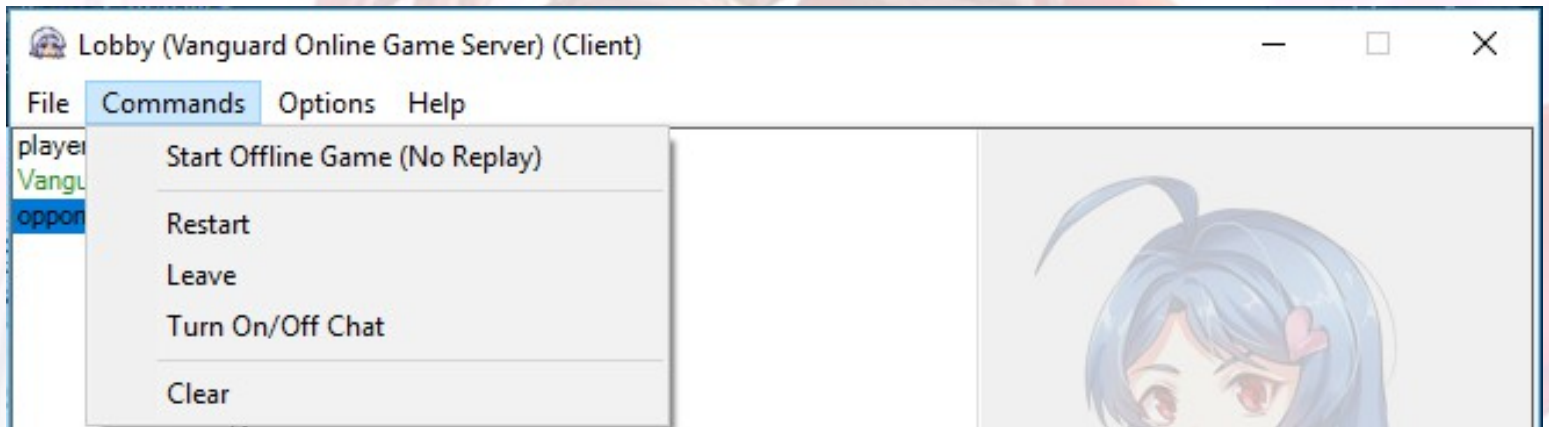


To remove an online Opponent from your Player List, click on their player name and click the “Remove” button. You will receive a message prompt to confirm if you want to remove the online Opponent from your list.



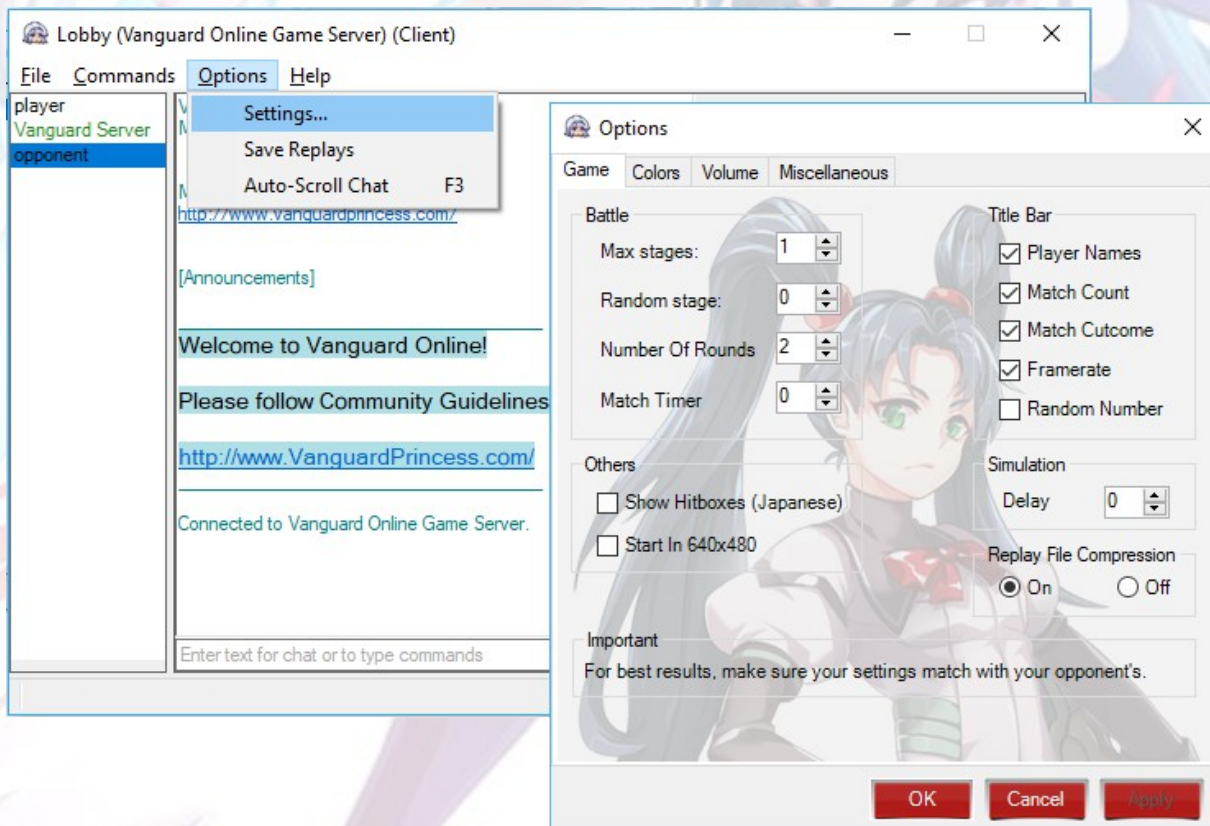
To play in “Offline Mode”, select on your player name and either click the “Play” button or select “Start Offline Game (No Replay)” from the Command menu. No Replay means that your game will not be recorded to your computer.

## These are basic system commands for Vanguard Online



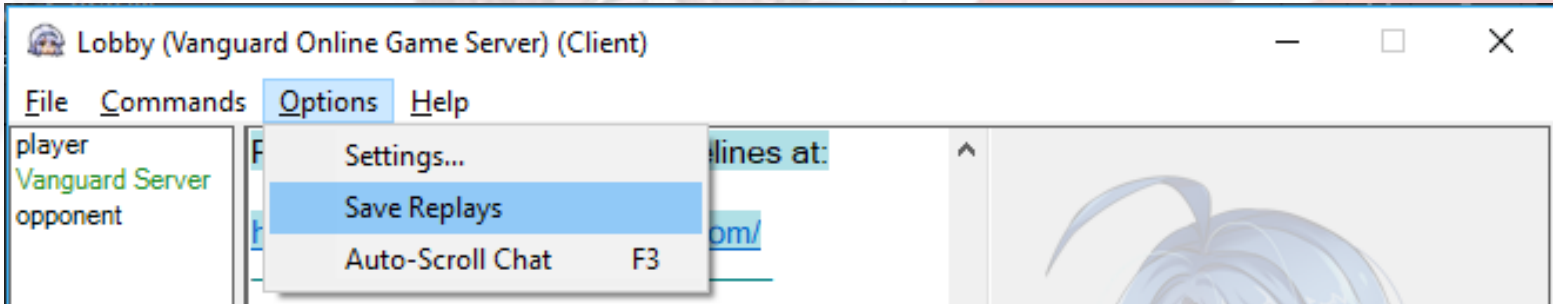
### Notable Commands:

- **Restart:** Reset online mode
- **Leave:** Leaves online mode and returns you to
- **Turn On/Off Chat:** You can disable chat if you choose to
- **Clear:** Clears the Log Thread

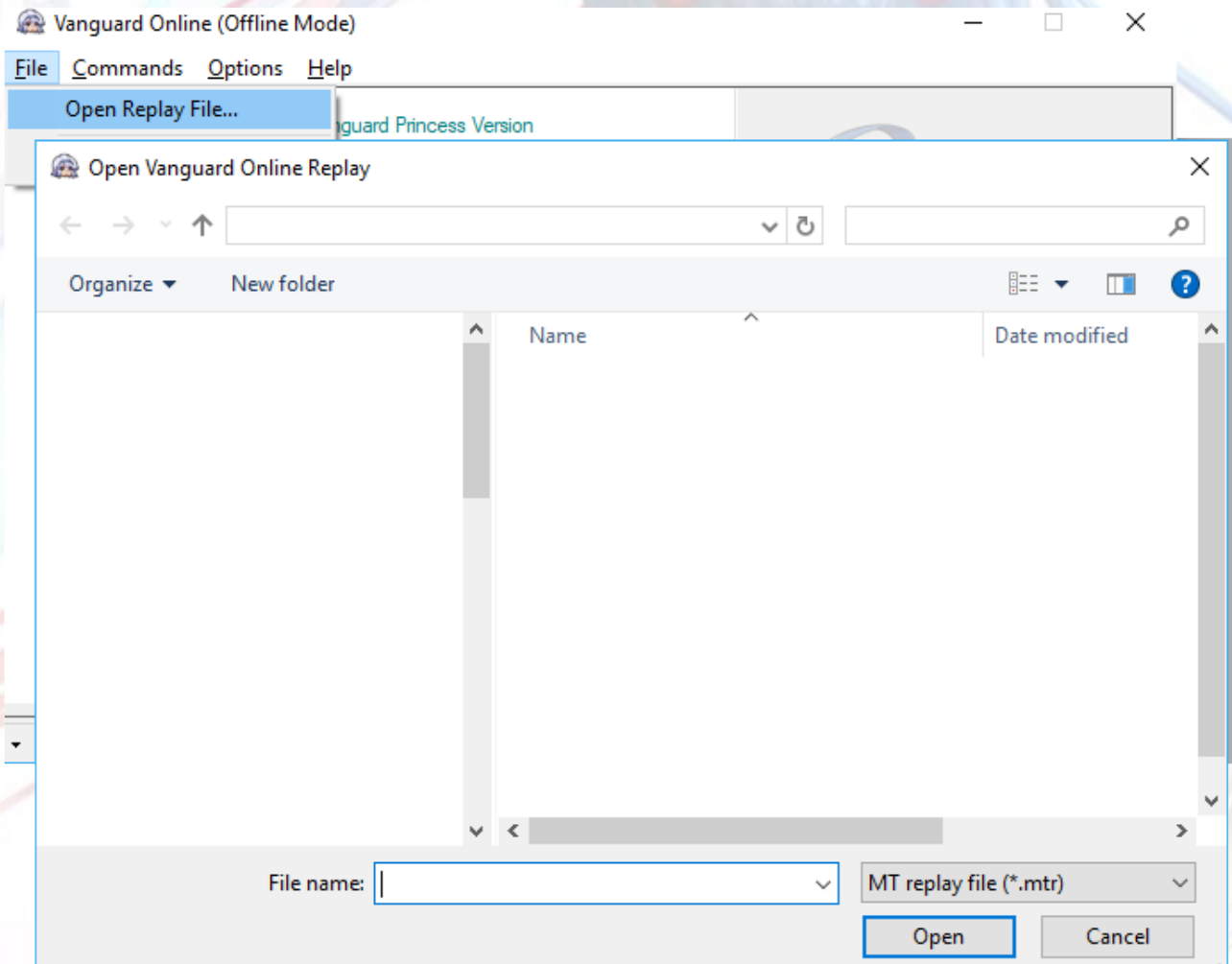


You can change various settings and configurations for Vanguard Online.

You can have Vanguard Online record and save your online versus mode sessions try “Save Replays”.



The replay files (.mts) will be located within the Vanguard Princess folder.



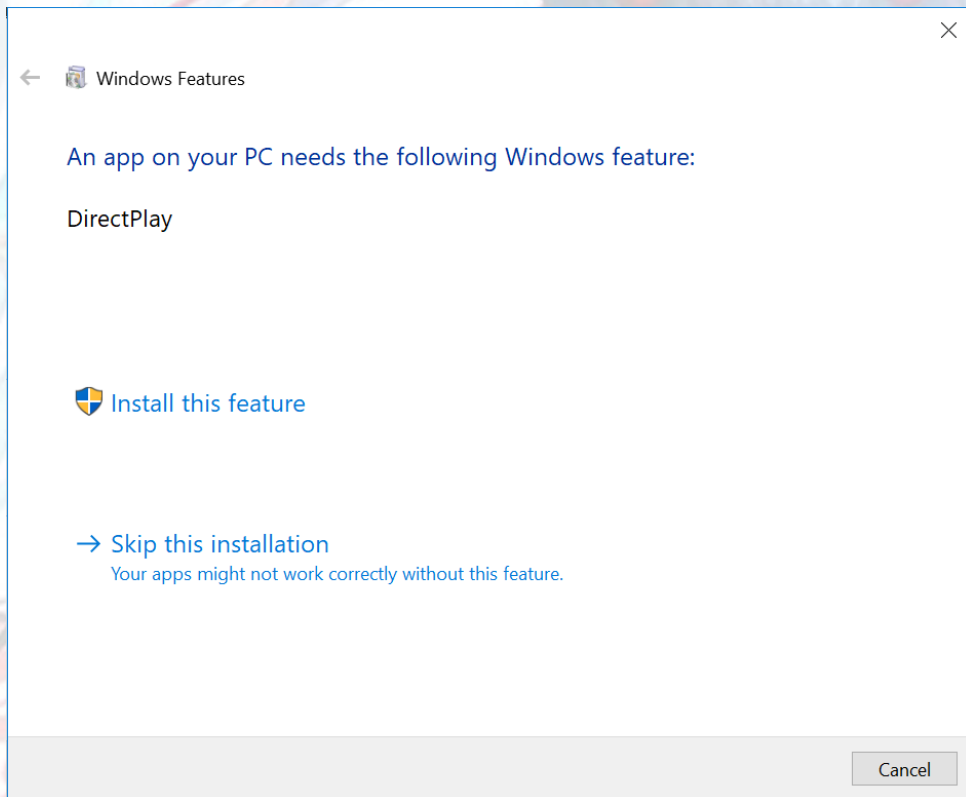
# Troubleshoot

## “Vanguard Online” doesn't open when I try to launch it.

Some users are unable to open “Vanguard Online”. If this is the case, please attempt the following:

- Install the latest Microsoft Visual C++ Redistributable
- Run “VanguardOnline.exe” as an administrator
- Create an exception for “VanguardOnline.exe” in your antivirus and firewall

## Why am I seeing this “DirectPlay” screen?

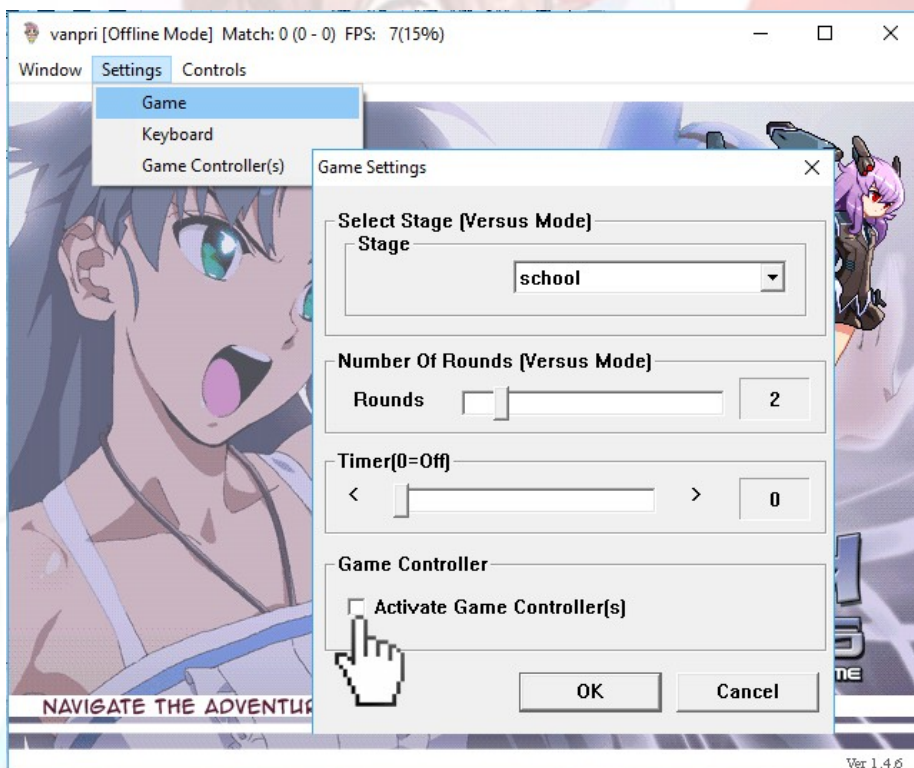


In order to play Vanguard Princess you must download “DirectPlay” into your computer before attempting to launch Vanguard Princess.

DirectPlay is a Microsoft software that makes it easy to connect games over the Internet. DirectPlay is required in order to play Vanguard Princess on PCs running Windows 8 or greater.

## Why is the game running so slow?

This is a game controller issue. If you're not using a controller or joystick. Turn off “Activate Game Controller(s)” checkbox from the game.



If you are using a controller or joystick. Turn on “Activate Game Controller(s)” checkbox from the game and make sure it's plugged in before you launch the game.

## On Vanguard Online I see an message that says “ERROR: There was no response from the opponent”

A player may have improperly exited the “VanguardOnline.exe” application and you have selected an opponent online who is no longer connected. Type “/reload” to refresh the Player List in the Text Area.

Report any technical issues to [business@eigoMANGA.com](mailto:business@eigoMANGA.com)